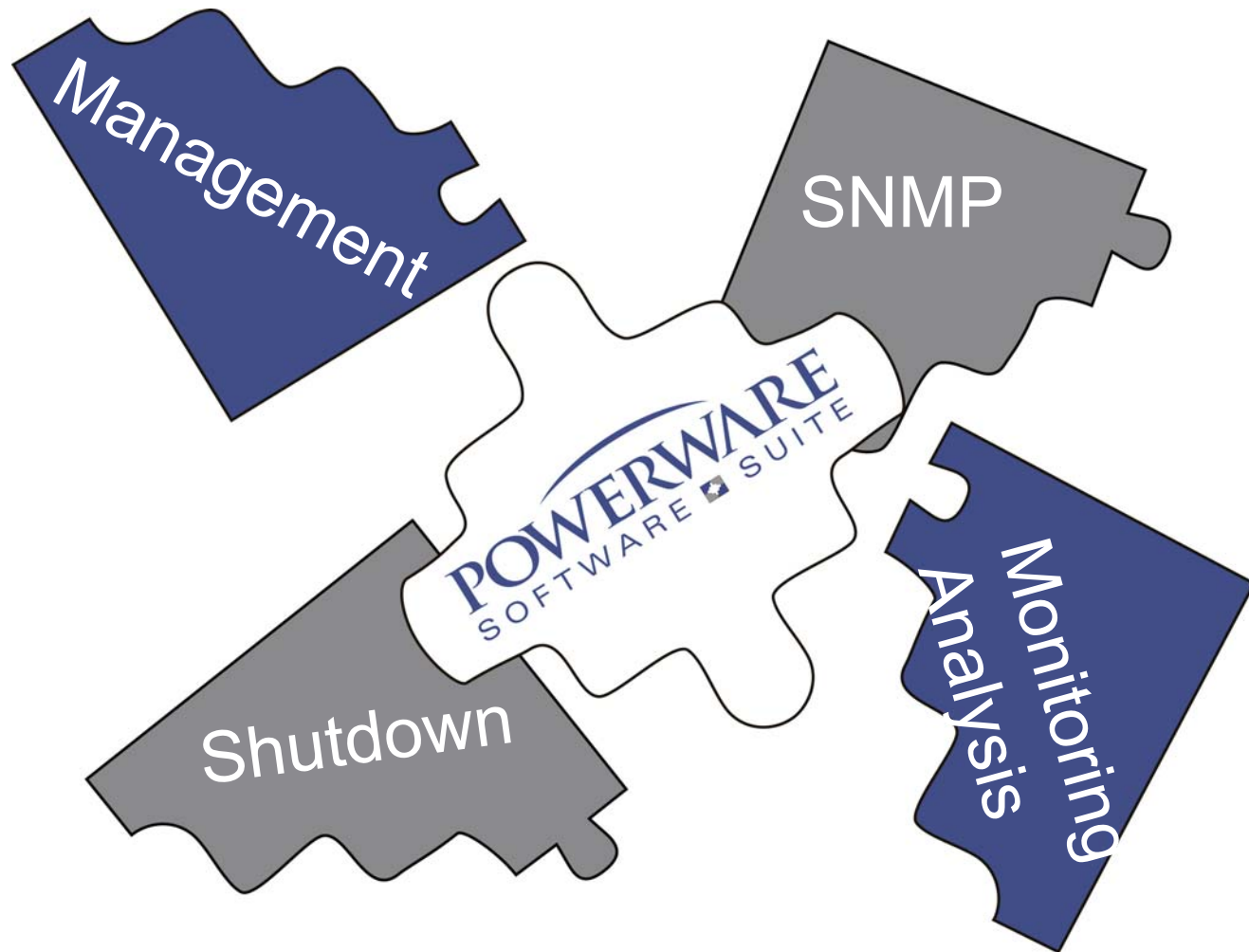




SOFTWARE SUITE

Marcus A. Maxwell
Sr. Software Product Manager
February 14, 2003

There Are Many Pieces in the Software Puzzle . . .



The Software Suite Brings All the pieces Together . . .



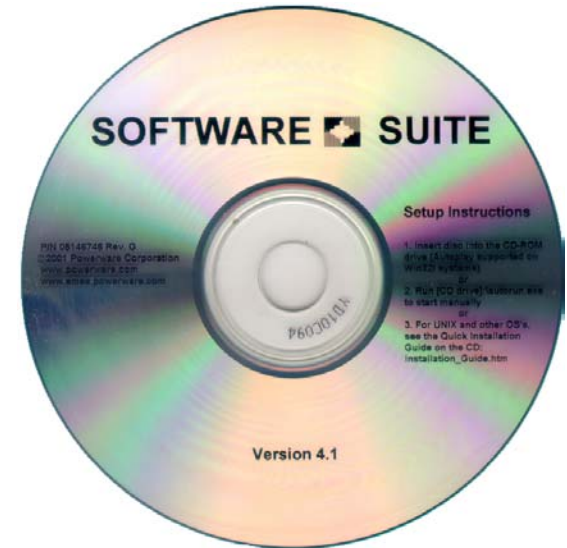
Software Positioning

- ◆ **LanSafe III / CheckUPS / Netwatch:**
Network shutdown for UPSs
- ◆ **OnliNet (Centro / Vista):**
SNMP-based network shutdown and monitoring for UPSs
- ◆ **PowerVision:**
UPS performance analysis and monitoring
- ◆ **Foreseer:**
Facility and data center management

Software Suite Contents

◆ Software Products

- ◆ LanSafe III
- ◆ OnliNet Vista / Centro
- ◆ CheckUPS Basic, Advanced
- ◆ Netwatch
- ◆ PowerVision (30-day trial version)



◆ Software Installation Wizard

◆ General Software Product Information

- ◆ Documentation (guides, manuals, release notes, readme files, etc.)
- ◆ Data Sheet PDFs (UPSs, Surge protection, Connectivity options, Software)
- ◆ Supported operating system charts

◆ Multimedia Demos

- ◆ LanSafe III, OnliNet, PowerVision and Foreseer

Software Suite Contents

(continued)

◆ Web Site Links

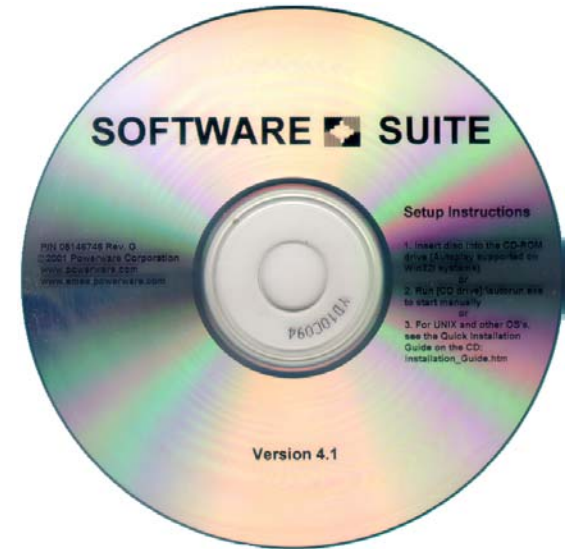
- ◆ Corporate (U.S.)
- ◆ Europe
- ◆ Asia (China)
- ◆ Australia
- ◆ Latin America (Brazil)

◆ Videos and Screen Savers

- ◆ 10 Product & Corporate videos
- ◆ 4 Screen Savers

◆ Miscellaneous

- ◆ Technical support web links: Americas and EMEA
- ◆ Acrobat Reader 4.0



How to start the Software Suite?

◆ Insert the Software Suite CD-ROM into the CD drive



- ◆ The Software Suite's multimedia CD-Menu user interface starts automatically after the CD-ROM is inserted into a compatible Microsoft Windows system (Windows 9x, NT, 2000, Me, XP w/AutoPlay functionality enabled)
- ◆ Applications, documents, and all other materials are available for other operating systems - the CD-Menu user interface supports Windows only.

Software Suite Main Menu



Start the software
Installation Wizard

Software Suite
Version and
date stamp

Start the Software
Suite intro video

Data sheets, manuals,
readme's, docs, links

Start LanSafe III, OnliNet,
PowerVision and
Foreseer demos

Software Suite Main Menu

(continued)

Several Screen Savers

10 Powerware and Product Videos including: Software Suite, 9340 UPS, ABM, HotSync, Efficiency optimizing and Company presentation

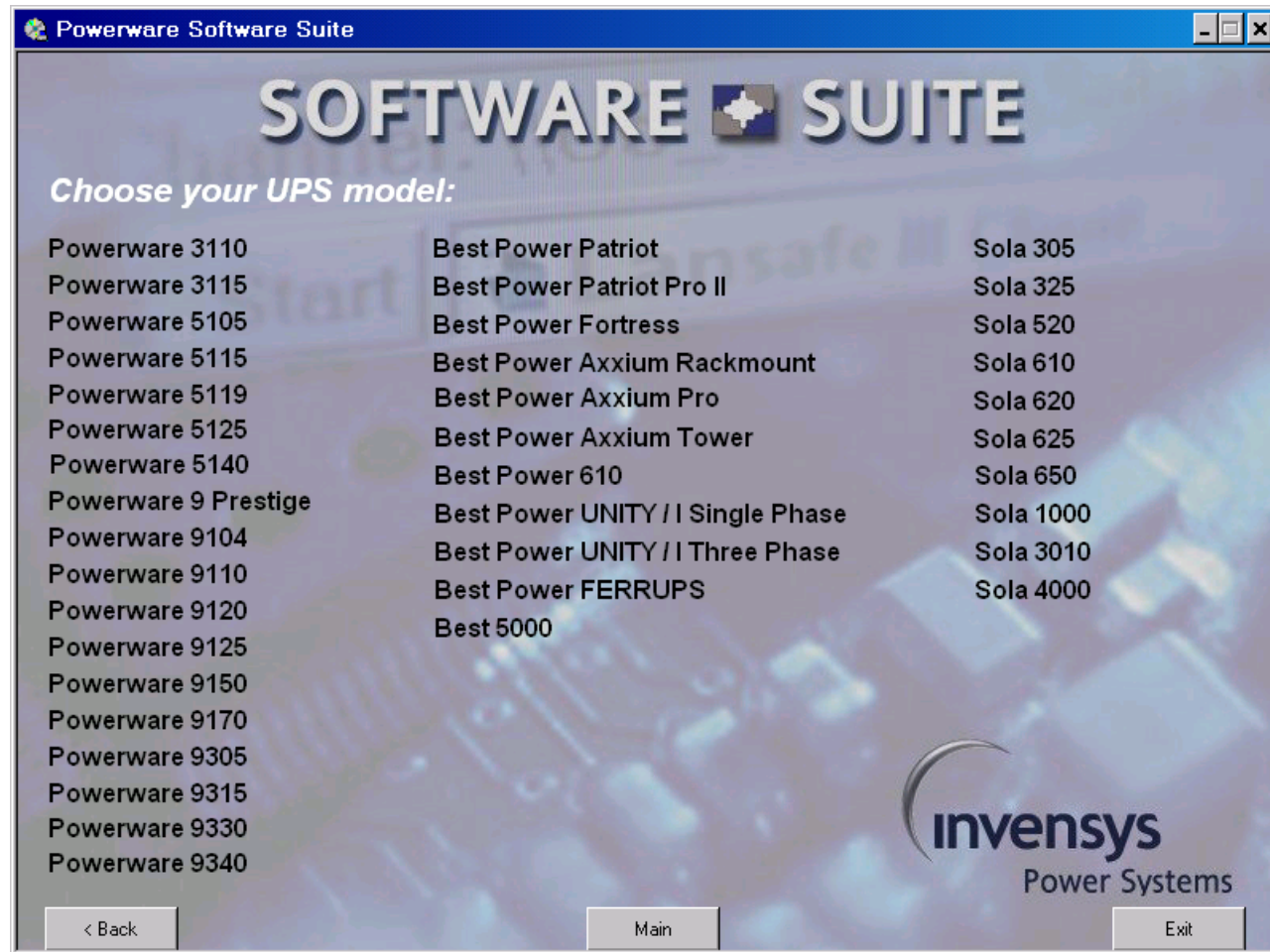
Web links to Powerware, Best, Sola and Invensys web sites

Link to Software Suite documentation



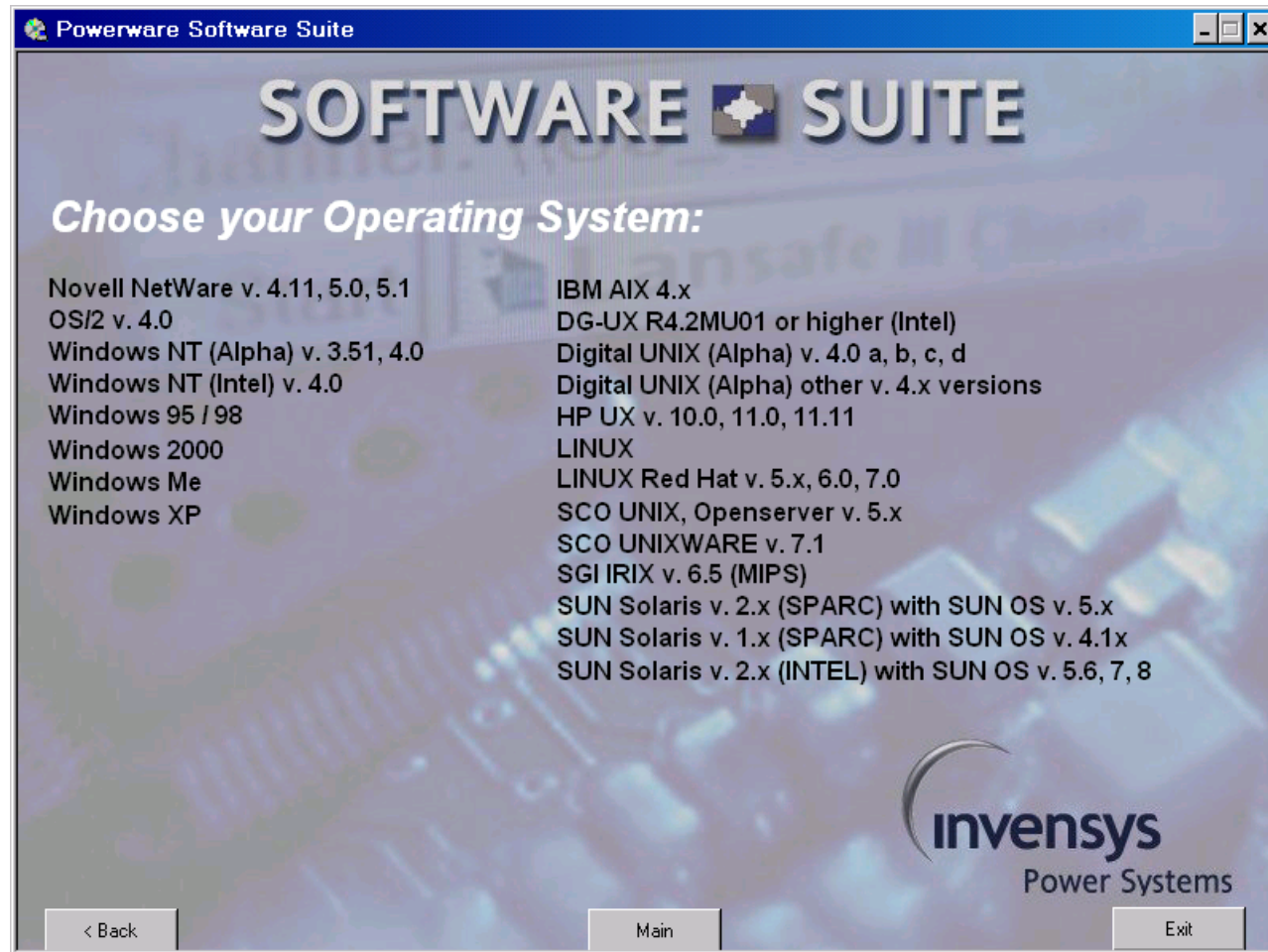
Installation Wizard

Step 1 - Choose your UPS model



Installation Wizard

Step 2 - Choose your Operating System



Installation Wizard

Step 3 - Choose your connection type

(Serial, USB, or ConnectUPS SNMP/Web adapter)



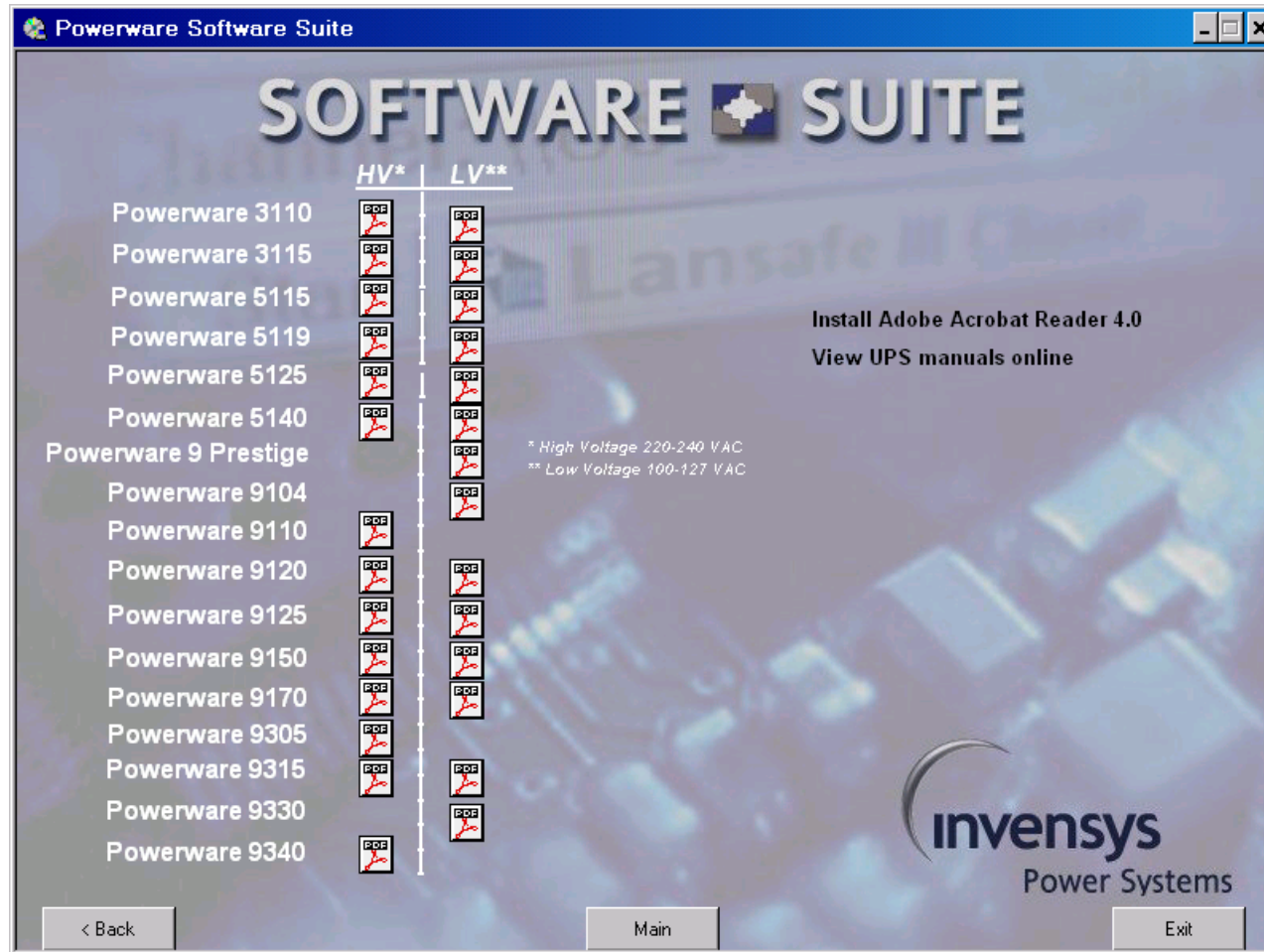
Installation Wizard

Step 4 - Start Software Installation



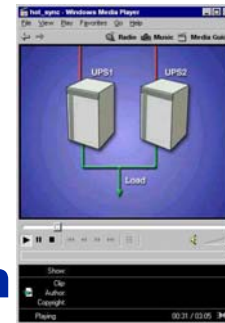
Product Data Sheets

- ◆ **UPSs, surge protection, connectivity options, and software**



Software Suite Video Clips

- ◆ **Powerware Software Suite Introduction**
- ◆ **Powerware - Powering the World**
- ◆ **Powerware Company Presentation**
- ◆ **What if . . . ?**
- ◆ **HotSync Parallel Redundancy**
- ◆ **Channel 4 Project - Case Study**
- ◆ **Real World Efficiency Optimizing**
- ◆ **Powerware Solutions**
- ◆ **Advanced Battery Management (ABM™)**
- ◆ **Powerware 9340 UPS**



What do you get? Key Selling Points

1. Extremely easy installation

- ◆ Click'n Go Software Wizard

2. Single CD-ROM with ALL software

- ◆ All software solutions bundled with UPSs on a single CD-ROM FREE-of-charge (650 MB)

3. Get always the latest and greatest software versions

- ◆ Direct connections to Powerware's software upgrade library

4. Online technical support

- ◆ Direct connections to Powerware's technical support and Web resources

5. Powerware's, Best's & Sola's full product library included

- ◆ UPS, connectivity, options & software data sheets included

6. Product videos & Fun Stuff

- ◆ 10 cool product video clips & several fun screen savers

New in Suite v. 4.2

◆ New LanSafe III v. 4.17.3a

- ◆ Support for Powerware Extensions for IBM Director
- ◆ Support for Linux Redhat 7.1, 7.2, 7.3, 8 & SuSE 8
- ◆ Support for IBM AIX 5.1
- ◆ New 9125 UPS models supported

◆ Netwatch

- ◆ Support for Macintosh MacOS X operating system

◆ PowerVision

- ◆ Support for IPM UPSs: BP II, BP III, BP Plus UPSs

◆ Foreseer

- ◆ New Flash-demo/presentation

◆ Enhanced Suite front-end graphics

- ◆ More intuitive front-end navigation

◆ Updated and new data sheets for Powerware products

